

Navigating using Radar

Index

	Page
Acknowledgements	i
Background	ii
Foreword	iii
Prior Knowledge Recommendations	iv
Learning Objectives	v
Introduction	1
Table of Contents	3
1.0 RADio Detection And Ranging... RADAR	5
1.1 Simple echolocation	5
1.2 What is radar?	6
1.3 The functions within radar	7
1.4 How radar works - frequency and wavelength	8
1.5 Antenna considerations	10
1.6 Summary	10
2.0 Transmitting a radar pulse	13
2.1 The “shout”	13
2.2 Characteristics of a radar pulse	14
2.3 Pulse width	14
2.4 Pulse Recurrence Frequency (PRF); or, occasionally, Pulse repetition rate (PRT)	14
2.5 Blanked zones	15
2.6 Summary	17
3.0 The antenna and radar receiver	19
3.1 The radar antenna	19
3.1.1 Harnessing interference patterns	19
3.1.2 Shaping the beam	21
3.1.3 Side lobes	24
3.1.4 Cross-section of the main beam	25
3.2 The Radar Receiver	26
3.2.1 Signal attenuation	26
3.2.2 Reflecting surfaces	27
3.2.3 Radar cross section (RCS)	28
3.2.4 The “black box”	29
3.3 Summary – antenna	29
3.4 Summary - receiver	30
4.0 Target discrimination	31
4.1 Line of sight	31

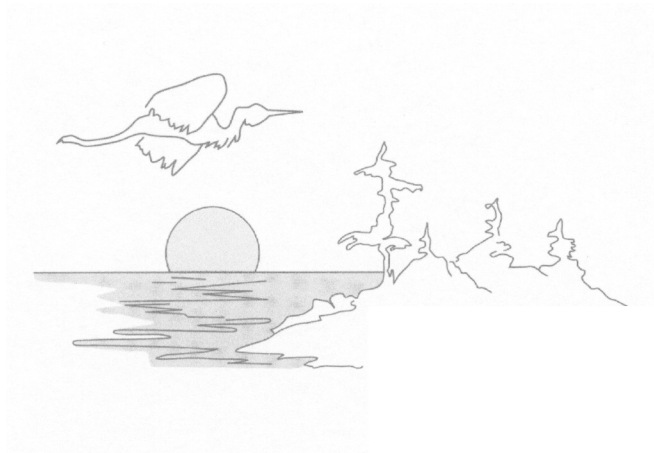
Navigating using Radar

4.2 The bends	31
4.3 Radar horizon	31
4.4 What can it see?	32
4.5 Target discrimination	33
4.5.1 Range discrimination	33
4.5.2 Azimuth discrimination	34
4.5.2.1 Small single objects	34
4.5.2.2 Large single vessels	35
4.5.2.3 Overlapping targets	35
4.5.3 Display interpretation	36
4.6 Summary	36
5.0 Operating the Radar	39
5.1 Radar operation	39
5.1.1 Automatic controls	40
5.1.2 “Grass”	41
5.1.3 Tweaking the display	41
5.2 Manual tuning	42
5.2.1 Tune	42
5.2.2 Gain	42
5.2.3 Sea clutter or Slow Time Constant (STC)	43
5.2.4 Rain clutter or Fast Time Constant (FTC)	43
5.2.5 Interference rejection	44
5.3 Summary	45
6.0 The Radar display	47
6.1 Display types	47
6.2 Target discrimination on the display	49
6.3 Colour displays	50
6.4 Digital display processing	50
6.4.1 Movable range markers and bearing lines	50
6.4.2 Target trails	52
6.4.3 Guard zones	52
6.5 Intermittent operation	53
6.6 Night operation	54
6.7 External inputs	54
6.7.1 GPS and fluxgate compass inputs	54
6.7.2 Chart information display	55
6.8 Summary	56
7.0 Atmospheric and weather effects	57
7.1 Anomalous Propagation (AP)	57
7.2 Precipitation	57
7.2.1 Line squalls	58
7.3 Antenna stability	58
7.3.1 Sailing	58
7.3.2 Powering	59
7.4 Self-levelling mounts	59
7.5 Summary	59

Navigating using Radar

8.0 Navigating with Radar - Part One	61
8.1 Collision Regulations when navigating with radar	61
8.2 Navigating with radar	61
8.3 The radar fix	61
8.4 Estimating azimuth error	66
8.5 Applied scenarios, or where radar really counts	67
8.5.1 Radar offshore	67
8.5.1.1 Figuring it out or calculating danger!	69
8.5.1.2 The collision course!	69
8.5.1.3 Target aspect angle	71
8.6 Calculating the numbers	74
8.6.1 By plotting	74
8.6.2 By “eyeball”	76
8.6.3 By “Post-It”	77
8.6.3.1 Be prepared	79
8.7 Summary	80
9.0 Navigating with Radar - Part Two	81
9.1 Landfall and estuary navigation	81
9.2 Landfall radar interpretation	81
9.2.1 The plan position display	81
9.2.2 Pre-planning landfall	82
9.2.3 Beam-width distortion	83
9.3 Estuary or coastal radar interpretation	84
9.4 External inputs	84
9.4.1 Maintaining a GPS route	85
9.5 Signal boosters	85
9.5.1 <u>R</u> Adio <u>b</u> ea <u>C</u> ONS (RACON)	85
9.5.2 Passive signal boosters	86
9.5.3 Radar reflectors	87
9.6 Radar specific safety devices	89
9.6.1 Radar signal detector	89
9.6.2 Search And Rescue Transponder (SART)	90
9.7 Summary	90
10.0 Some final considerations	93
10.1 On buying radar	93
10.2 On installing radar	93
10.2.1 The display	93
10.2.2 The antenna	93
10.2.2.1 Power	94
10.2.2.2 Sail	94
10.3 Down the road?	95
10.3.1 ARPA, Mini-ARPA or ATA	96
10.4 The last word	98
COLREGS Attachment - Extracts from Canadian Collision Regulations	99
Useful references	102
Index	103

Navigating using Radar



Compliments of the North Bay Power and Sail Squadron

North Bay, Ontario